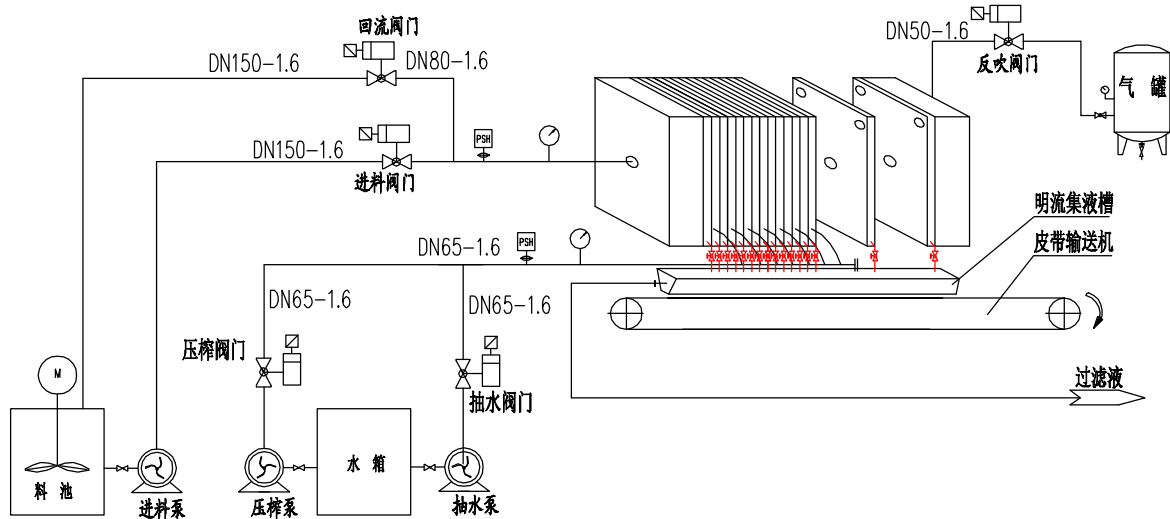


一、压滤机脱水工艺流程图



二、Process design:

1. The process uses 1500PP diaphragm squeeze automatic plate filter press, single filtration area 154 square, the working pressure is 0.7–0.8mpa, squeezing pressure of 1.0–1.3mpa.
2. Feed, purge reflux, press, pumping, reverse blowing adopts pneumatic valve control.
3. Filter adopting open (i.e. tap water, tap water is G3/4 inches) bilateral, using DBBO single cylinder are pressed.
4. The equipment control system with manual and automatic control of two patterns, and two kinds of mode can be switched.

三、Technological process.

Press filter plate: press the program started, pump and pressure electromagnetic valve, hydraulic system oil pressure reaches the pressure sensor volume concentration of upper limit of 26mpa, press enter automatic pressure state, at the same time on the pressing plate into place induction switch also receives the signal and directed into a working state (feed filter).

Feed filter: inlet valve open, all the tap is open, the rest of the valves are closed, open feed pump. Feed pump available at the time of 0–150 minutes arbitrary regulation, feeding pressure reaches 0.8MPa, the feeding pressure sensor receives the signal feed end and directs PLC enters the next working shape (blow), the inlet valve, inlet pump stops working.